

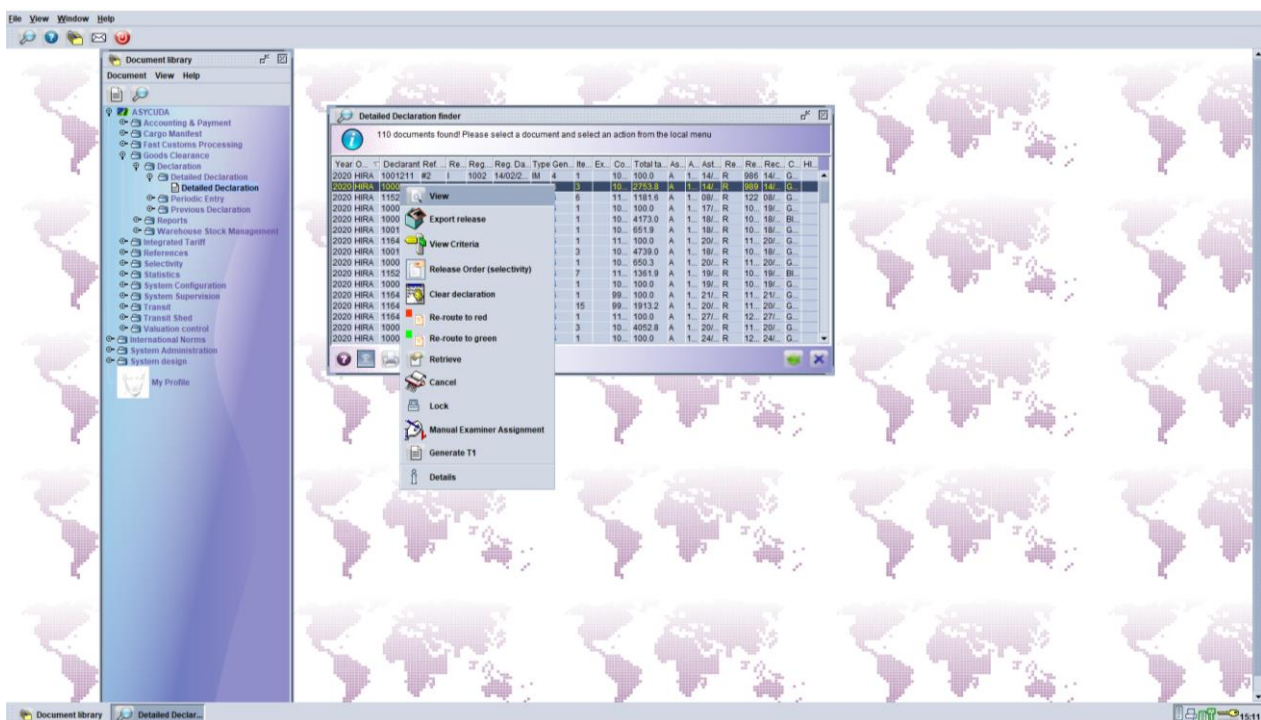
Solomon Islands Customs & Excise Division, Ministry of Finance and Treasury

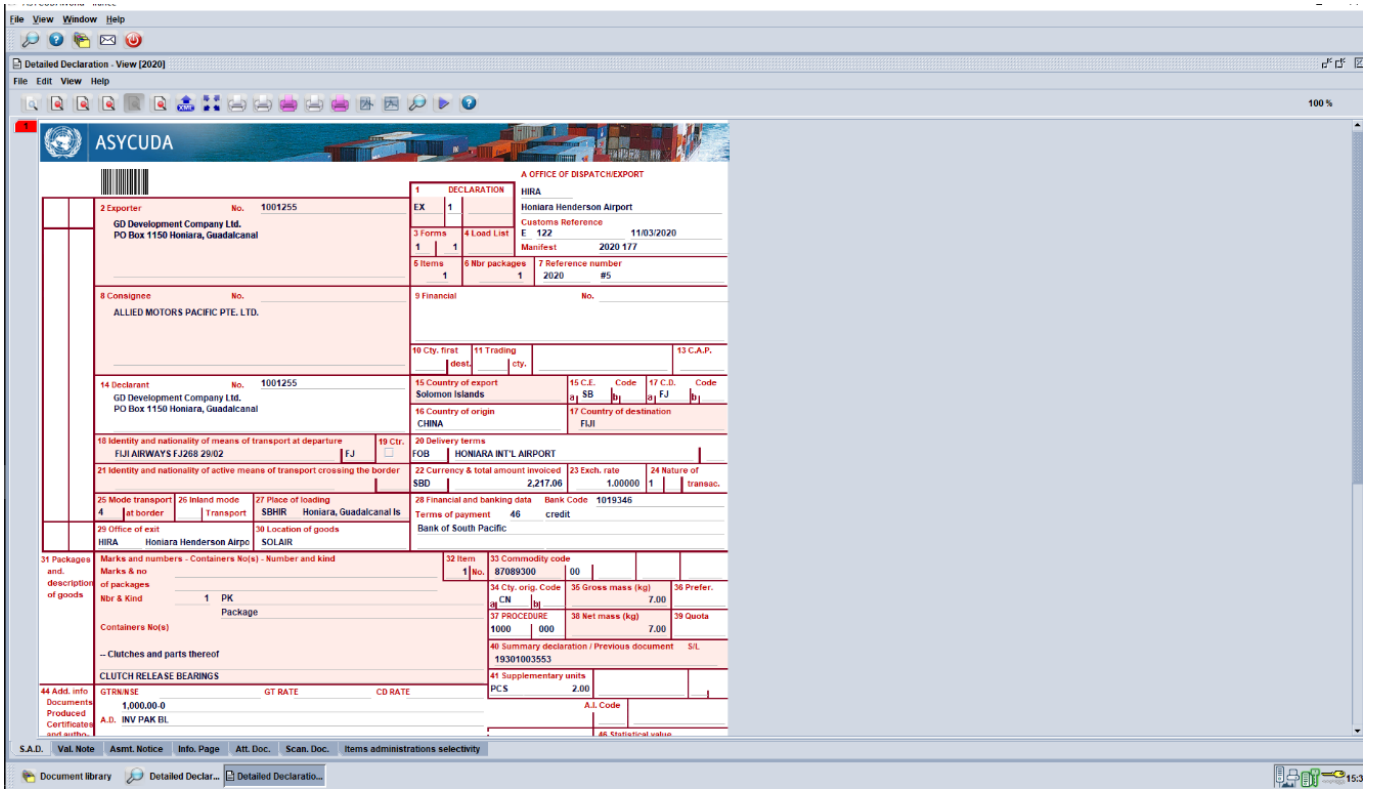


How to view 'Scanned Documents' on a SAD

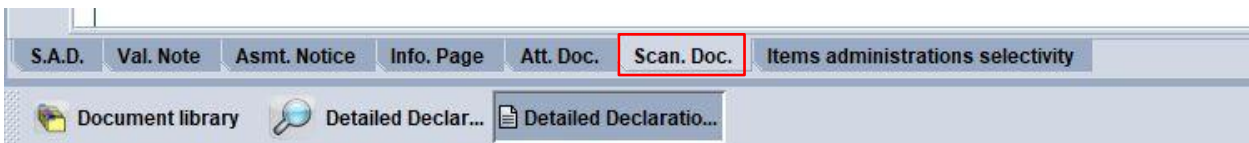
The following 'Functional Note' provides registered users of the ASYCUDA World (AW) system with the information necessary to enable them to view any scanned attached document(s) which may be required on a SAD.

1. Log into the system
2. Go to ASYCUDA ➔ Goods clearance ➔ Declaration ➔ Detailed Declaration
3. Find and Open 'SAD'





4. Select Scan document 'TAB'



5. Click on scan file

Code	File name	Status
BL	AMP200229 - AWB.jpg	0 %
INV	AMP200229 - INV.pdf	0 %

6. Click 'View Button' to preview file.

