



How to Input a Manifest into the ASYCUDA World System

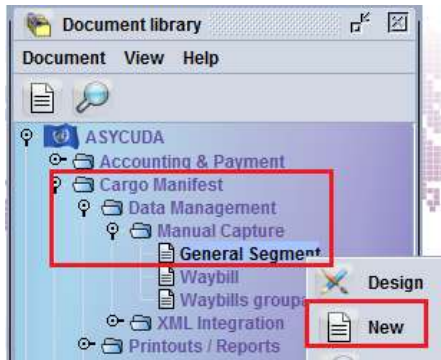
The following “Functional Note” provides registered users of the ASYCUDA World (AW) system with a summary of the different options for inputting a manifest into the ASYCUDA World (AW) system. More detailed information can be found in the following functional notes, viz:

- How to manually process, store and register a Manifest
- How to electronically integrate a Manifest

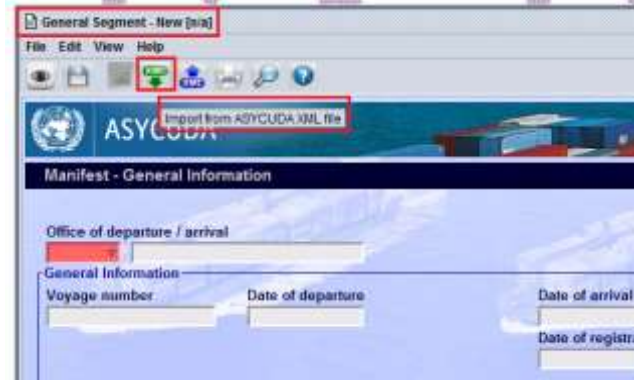
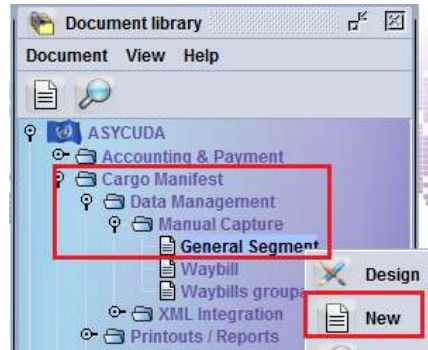
There are three (3) different methods for inputting data associated with the Manifest which are summarised in the table below.

<p>Data entry through AW system Manual Capture</p>	<p>Data entry through AW system Importation XML File</p>	<p>XML Integration</p>
<p>After accessing the AW server using your login/password, the AW functionality can be utilised to manually capture all information related to a Manifest-General Segment and/or Bills</p> <p>⇒ The data capture/input has to be done for each General Segment and for each Bill</p>	<p>After accessing the AW server using your login/password, the AW functionality can be used to import information related to a Manifest-General Segment and/or Bills from an xml file</p> <p>⇒ The importation of data has to be done for each General Segment and for each Bill</p> <p>⇒ An .xml file should be prepared for each General Segment and for each Bill</p>	<p>After accessing the AW server using your login/password, the AW functionality can be used to upload an entire manifest (General segment + all its bills) onto the AW system.</p> <p>⇒ An .xml file should be prepared for the entire manifest</p>

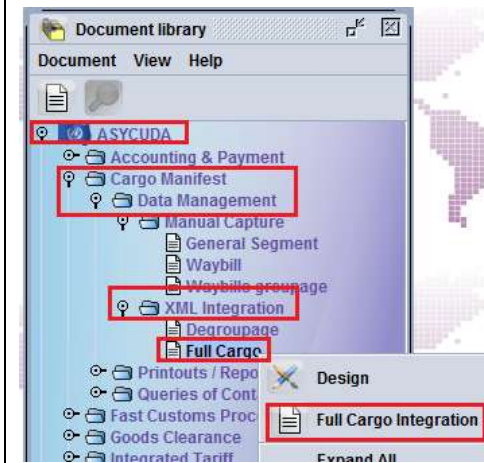
General Segment



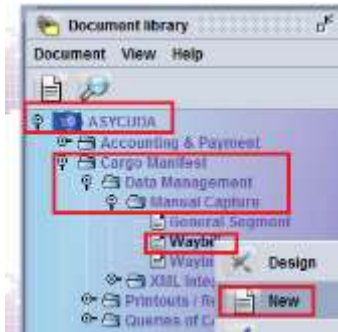
General Segment



Entire Manifest

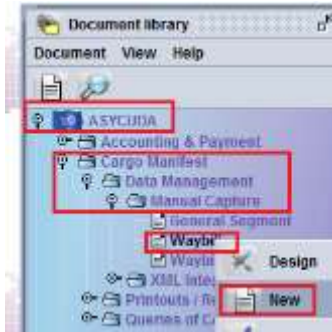


Bills



A screenshot of the ASYCUDA Manifest - Waybill form. The form is titled 'Manifest - Waybill' and contains several input fields for general information. The 'Office of departure / arrival' field is highlighted with a red box. The form includes fields for Voyage number, Date of departure, Date of arrival, Waybill reference number, Waybill type, Nature of cargo, Previous document, UCR, Place of loading, Place of discharge, Carrier, and Exporter/Shipper.

Bills



A screenshot of the ASYCUDA Manifest - Waybill form, identical to the first screenshot. An 'Import from ASYCUDA XML file' button is highlighted with a red box in the top right corner of the form area.