



How to Electronically Integrate a Manifest?

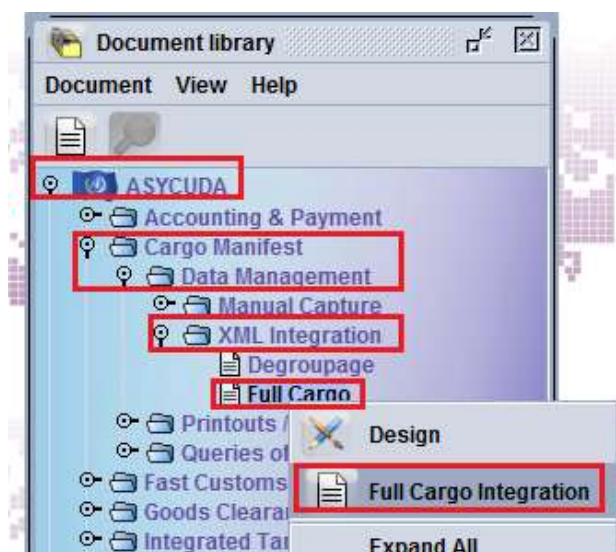
The following “Functional Note” provides registered users of the ASYCUDA World (AW) system with the information necessary to enable them to integrate an entire manifest – including the General Segment and the associated Bills - onto the AW system.


The facility will reduce the time and effort spent by ASYCUDA World users in keying in the manifest by uploading an entire manifest electronically.

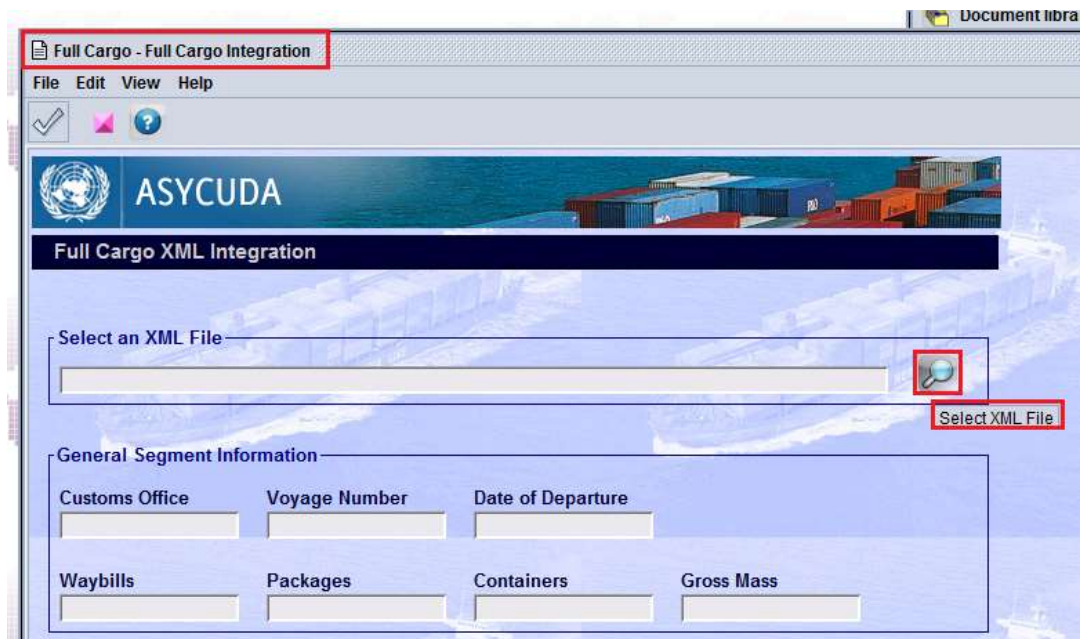
How to process and store the General Segment?

This is done as follows:

1. Once logged-in to the system, go to ASYCUDA → Cargo Manifest → Data Management → XML Integration → Full Cargo
2. Right click and choose **New**

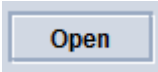


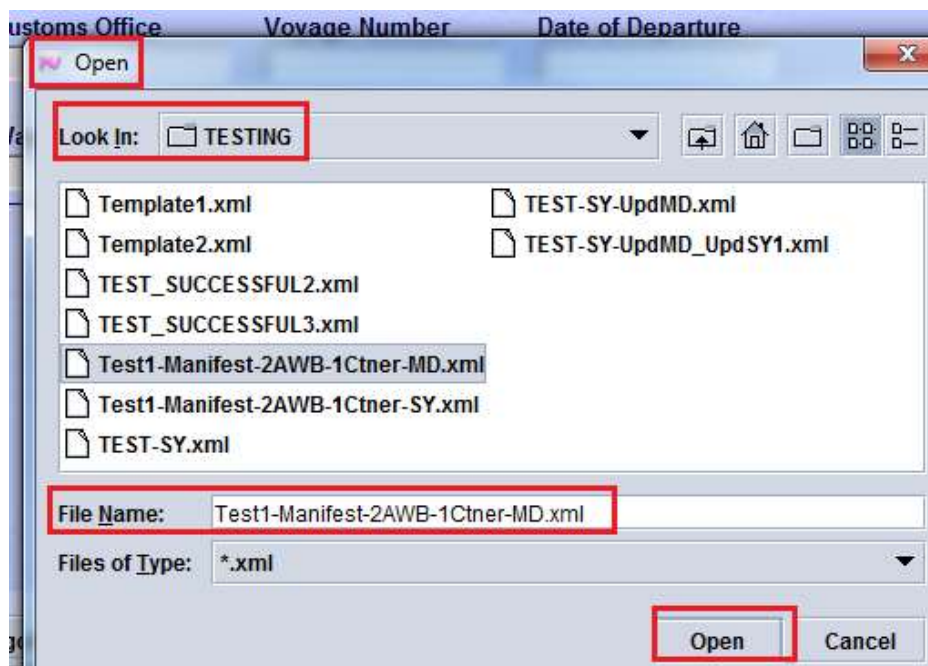
3. Once the screen is opened, click on the **Select XML File**  icon



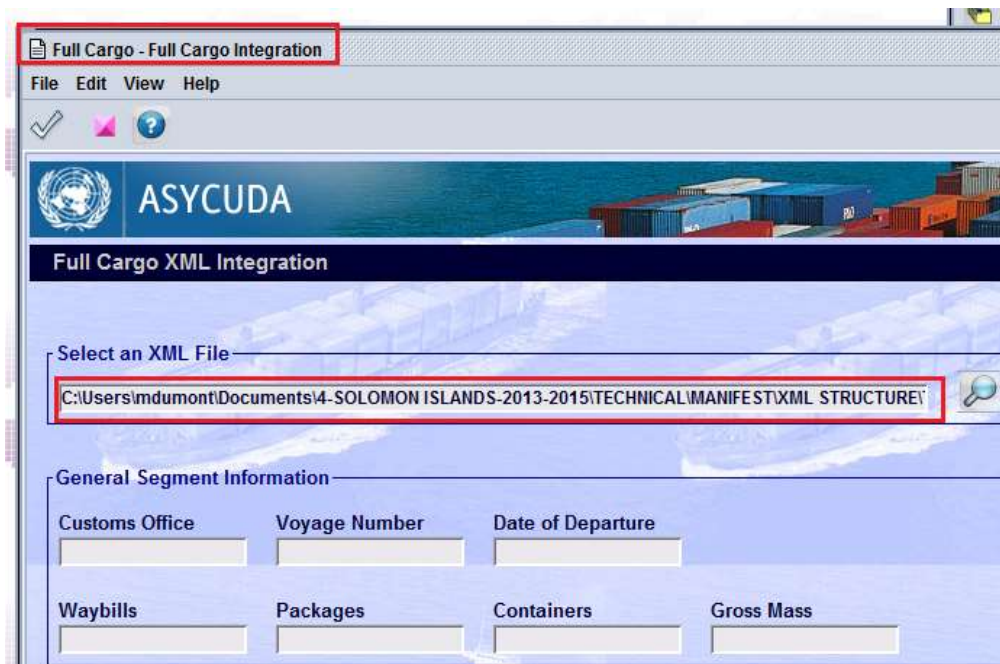
4. In the **Open** screen, indicate:

- a. In which directory to **Look In** to find the .xml file to be loaded and
- b. The **File Name**

c. Then click on 



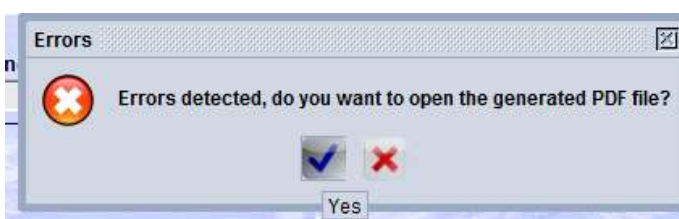
5. On the **Full cargo – Full Cargo Integration** screen, the .xml file path and name is displayed




6. Click on the **Check XML content**  icon



7. If errors are detected the system will generate a .pdf file that should be open to view them



8. By clicking on , the generated .pdf file will be displayed on the screen

Manifest fast integration errors report


File name: Test1-Manifest-2AWB-1Ctner-MD.xml

1) Functional Errors: 1

- This manifest already exists

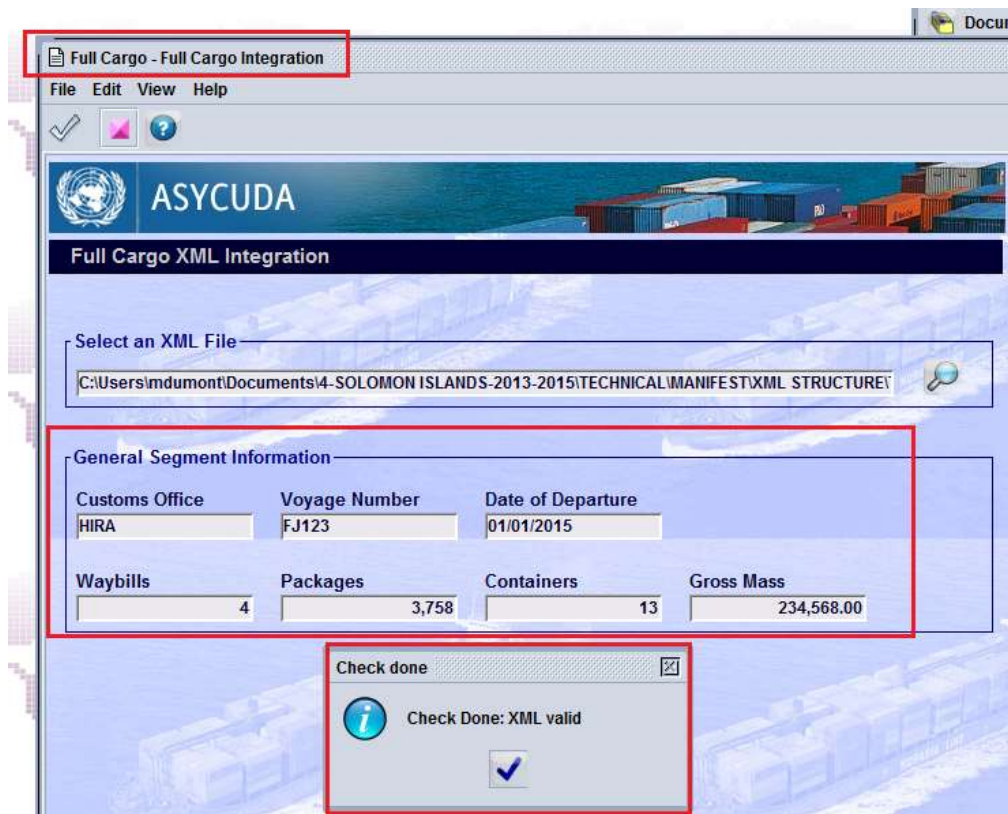
2) Technical Errors: 26

- cvc-datatype-valid.1.2.1: '' is not a valid value for 'time'.

9. Correct all the errors (by modifying the .xml file) and click on the **Check XML content** icon 

You should note that the system will not accept the .xml file until all the errors have been corrected


10. When all the errors have been corrected, the system will confirm that the .xml file is valid and display the information related to the General Segment: Customs Office, Voyage Number, Date of Departure, Total number of Bills, Packages and Container, and Total Gross Mass)




The screenshot shows the ASYCUDA Full Cargo XML Integration interface. The window title is "Full Cargo - Full Cargo Integration". The interface includes a menu bar (File, Edit, View, Help) and a toolbar with a checkmark, a pink square icon, and a question mark. The main area displays the ASYCUDA logo and the text "Full Cargo XML Integration". Below this, there is a "Select an XML File" section with a text box containing the file path "C:\Users\mdumont\Documents\4-SOLOMON ISLANDS-2013-2015\TECHNICAL\MANIFEST\XML STRUCTURE\". A "General Segment Information" section is highlighted with a red box and contains the following data:

Customs Office	Voyage Number	Date of Departure	Waybills	Packages	Containers	Gross Mass
HIRA	FJ123	01/01/2015	4	3,758	13	234,568.00

A "Check done" dialog box is also highlighted with a red box, displaying the message "Check Done: XML valid" and a blue checkmark icon.

11. Click on 

12. Click on the **Show ignored warnings, verify and save**  icon





Note: It is possible to follow the progression of the integration on the screen



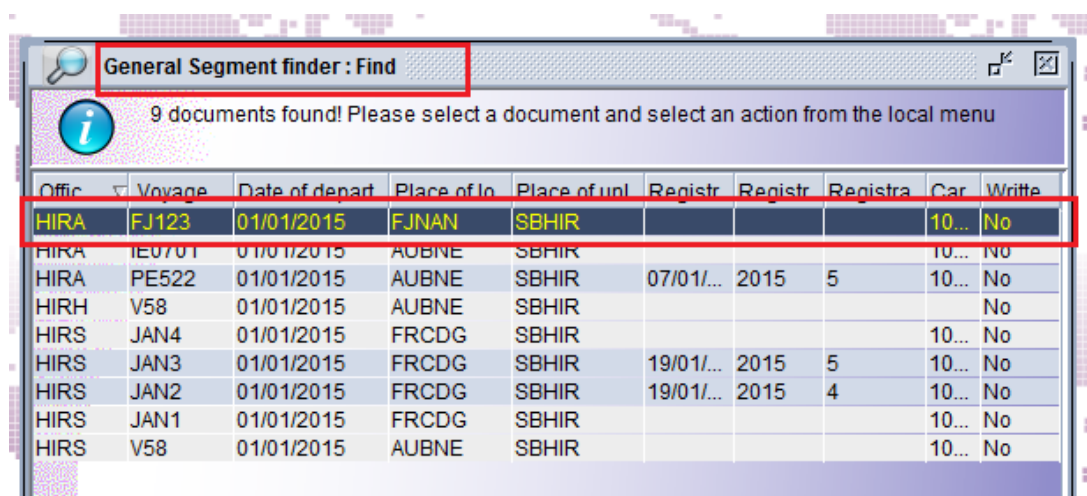
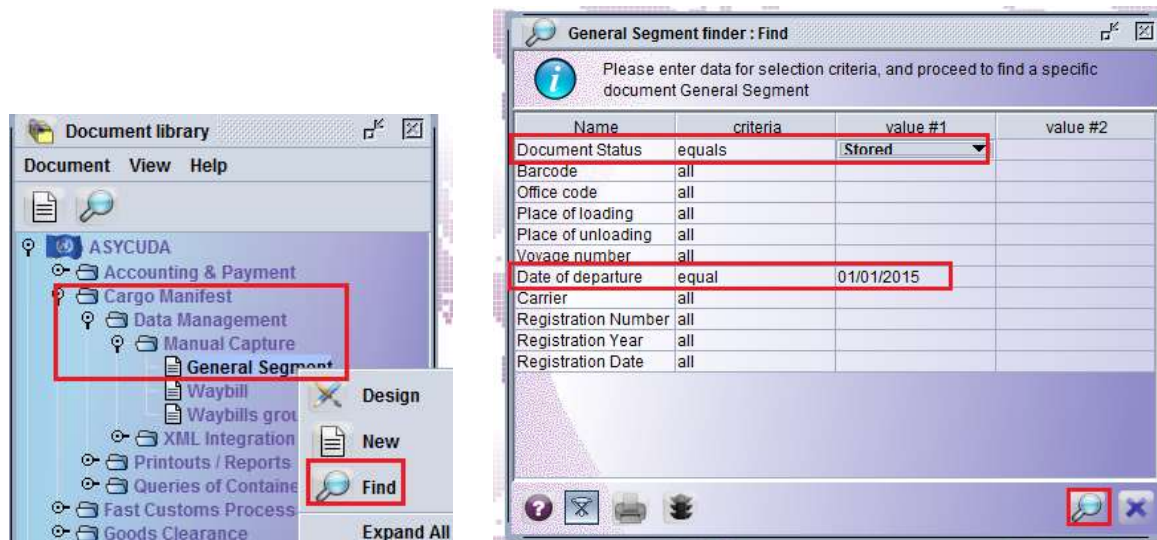
When completed, the following message will be displayed, indicating that the manifest is now stored in the AW system



13. Click  on the **Transaction completed** screen if you do not wish to continue working

Conversely, click  on the **Transaction completed** screen if you wish to continue integrating xml file; a new **Full cargo – Full Cargo Integration** screen is opened

14. Verify the manifest is stored



15. Register the manifest

Once the manifest is completed and no further adjustment is required, proceed with the manifest registration (refer to the “How to manually process, store and register a manifest”) functional note.